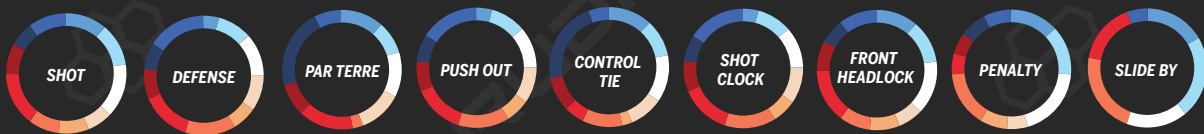
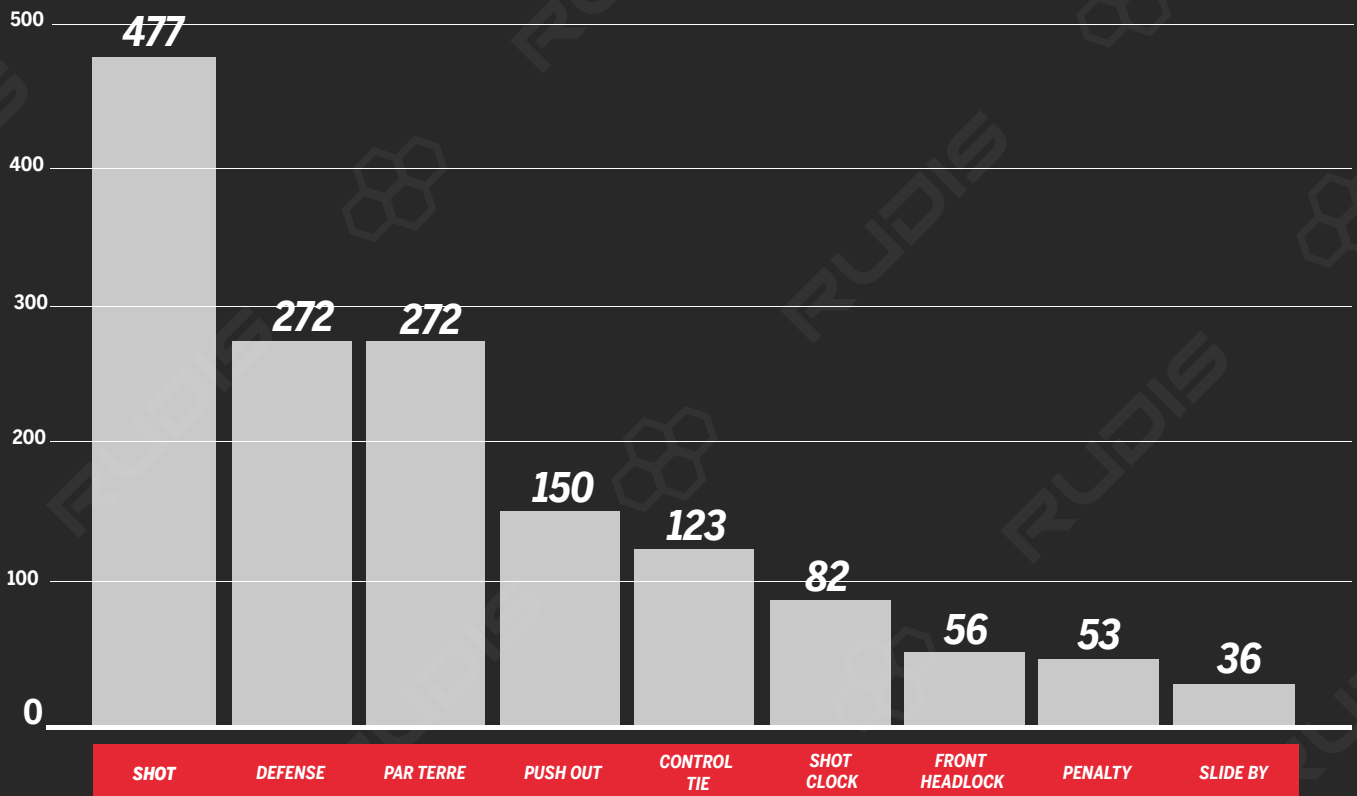




2018 WORLD CHAMPIONSHIPS

SCORING BREAKDOWN

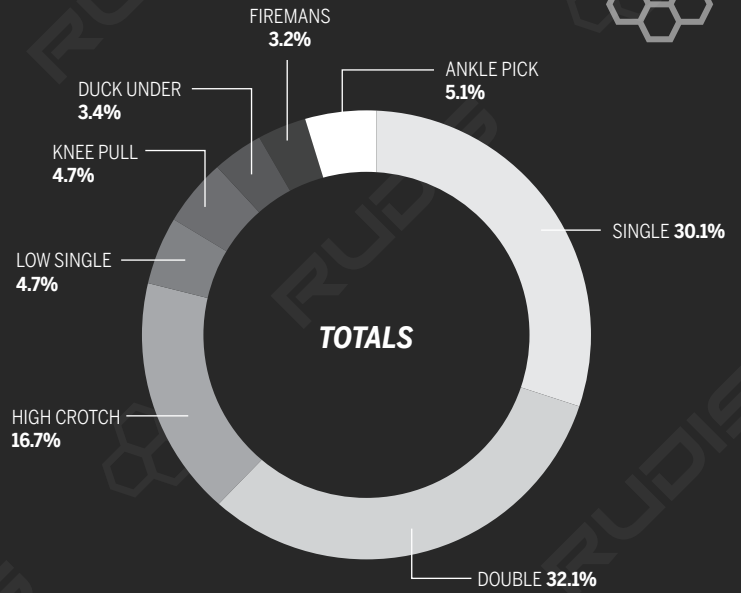
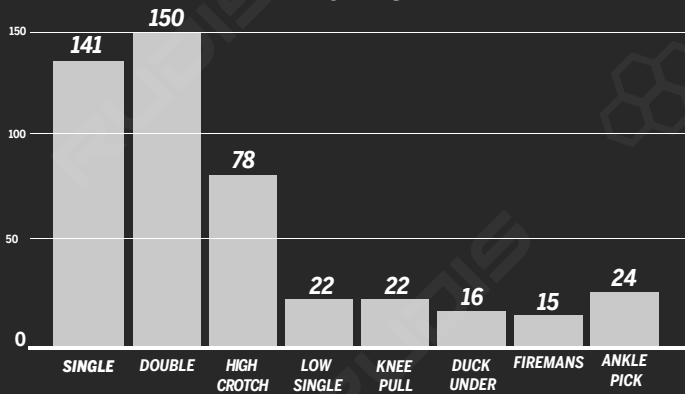


57 KG 65 KG 74 KG 86 KG 97 KG 61 KG 70 KG 79 KG 92 KG 125 KG

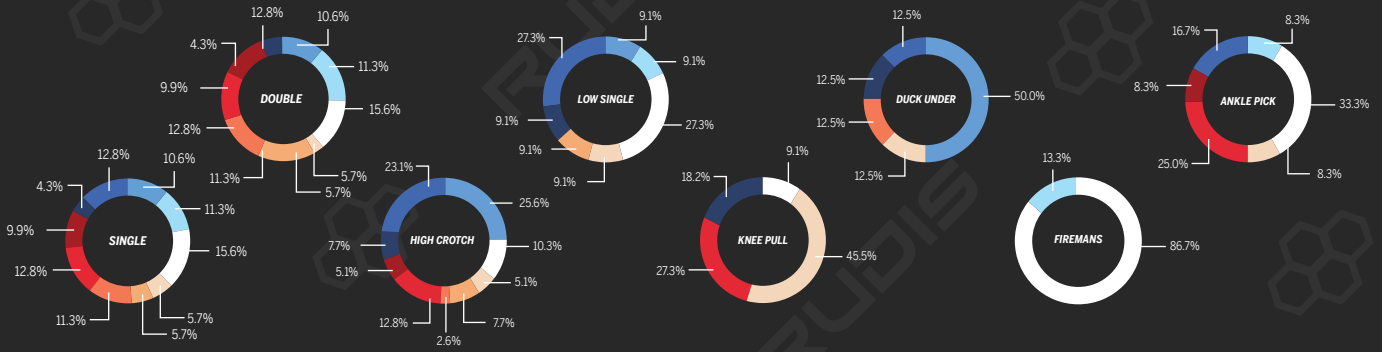
SHOT SCORES BY ATTACK



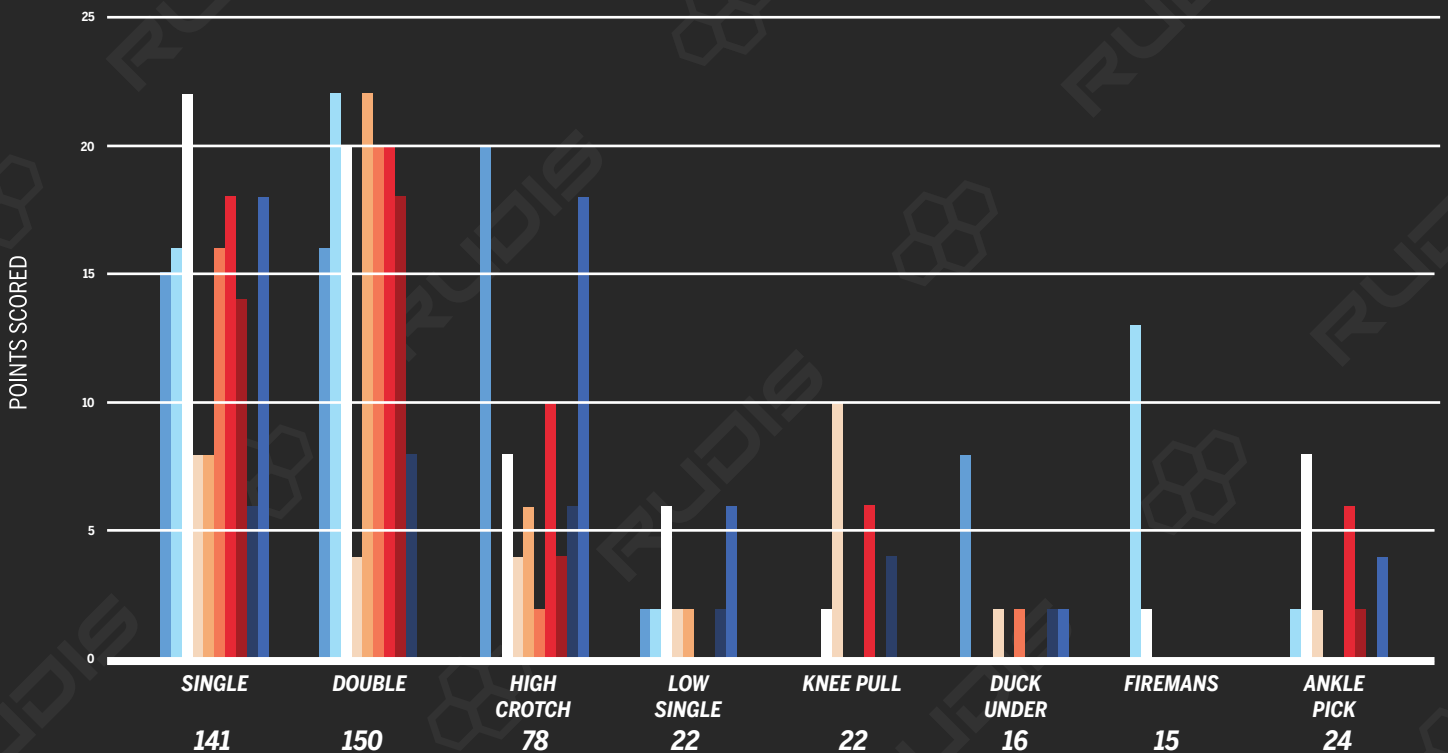
TOTALS



SHOTS BY WEIGHTCLASS



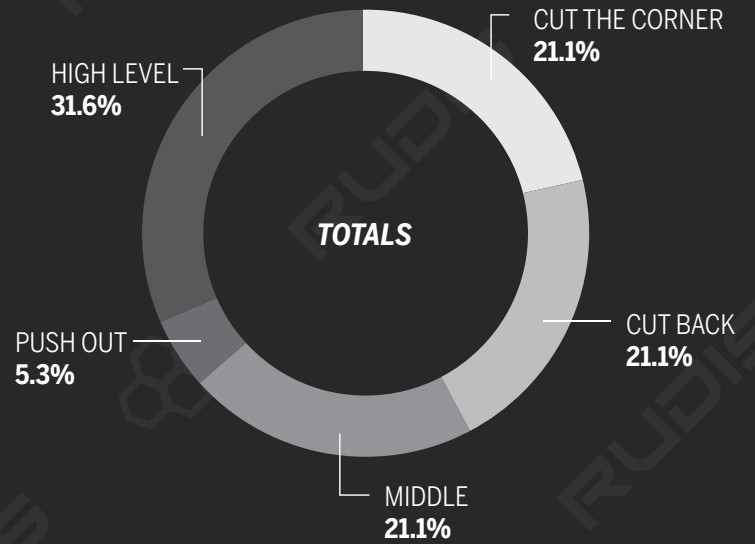
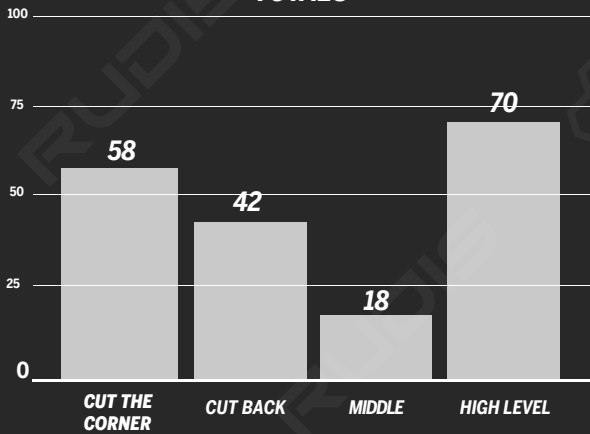
■ 57 KG
 ■ 65 KG
 ■ 74 KG
 ■ 86 KG
 ■ 97 KG
 ■ 61 KG
 ■ 70 KG
 ■ 79 KG
 ■ 92 KG
 ■ 125 KG



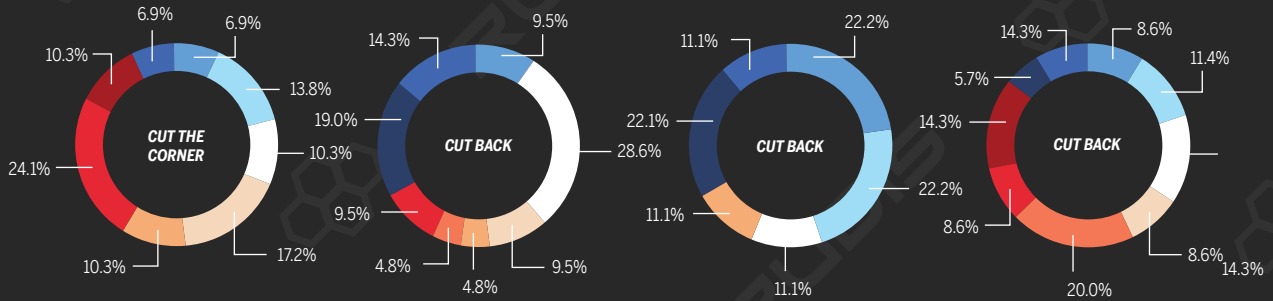
SINGLE LEG FINISHES



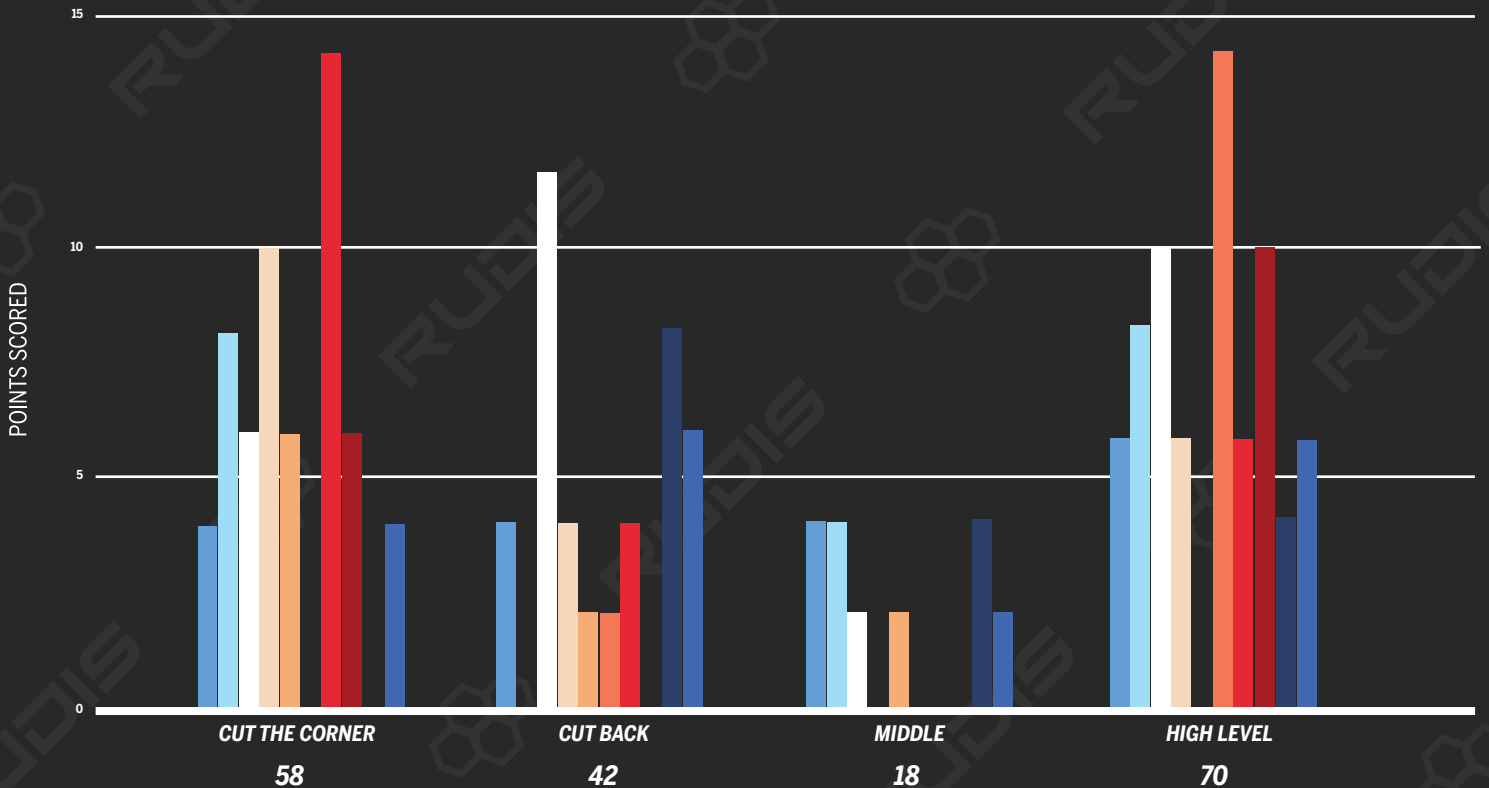
TOTALS



SINGLE LEG FINISHES BY WEIGHTCLASS

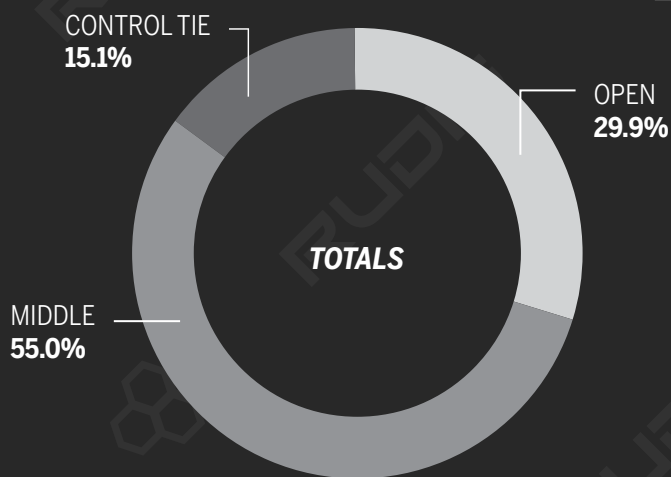
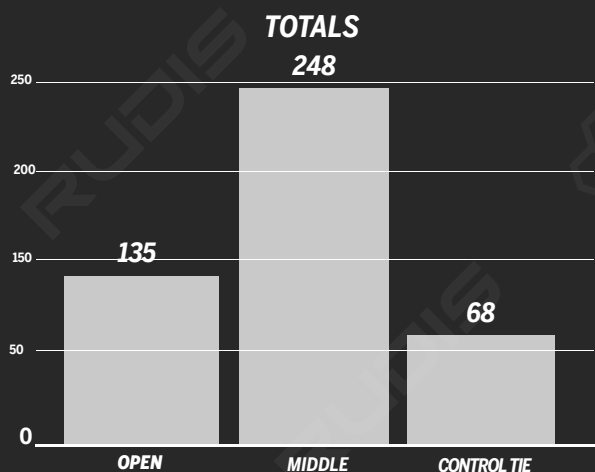


57 KG 65 KG 74 KG 86 KG 97 KG 61 KG 70 KG 79 KG 92 KG 125 KG

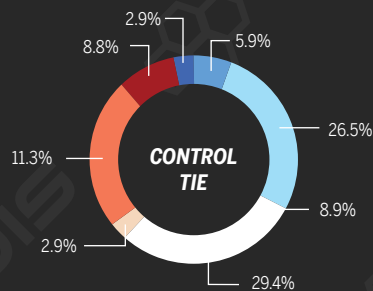
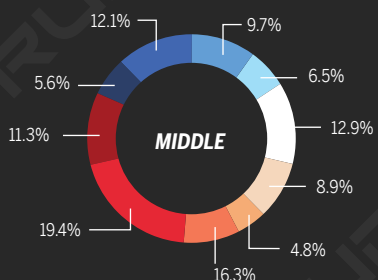
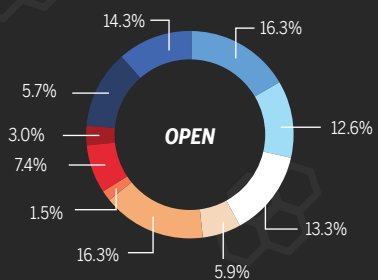




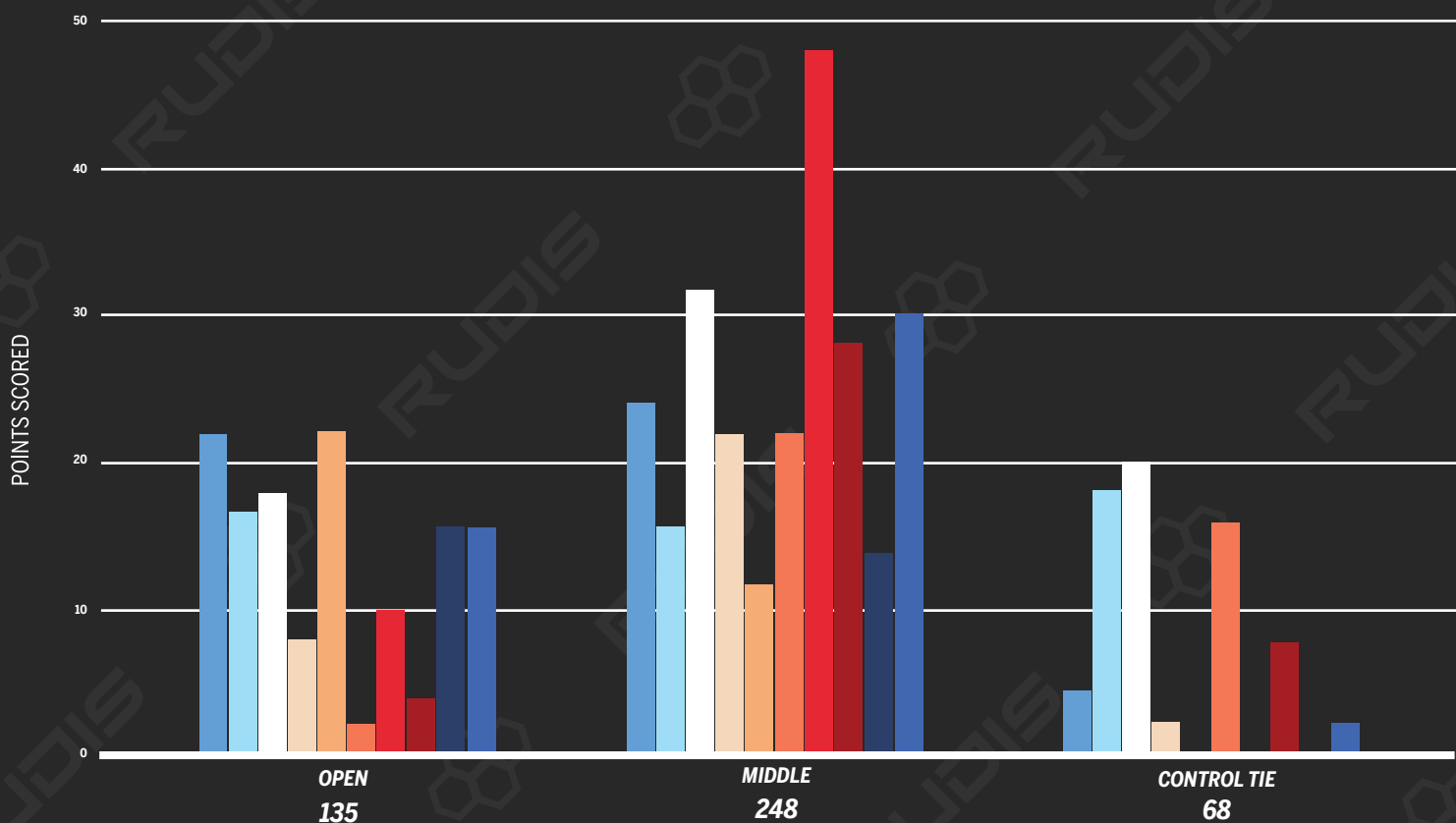
SETUPS FOR ATTACKS



SETUPS BY WEIGHTCLASS



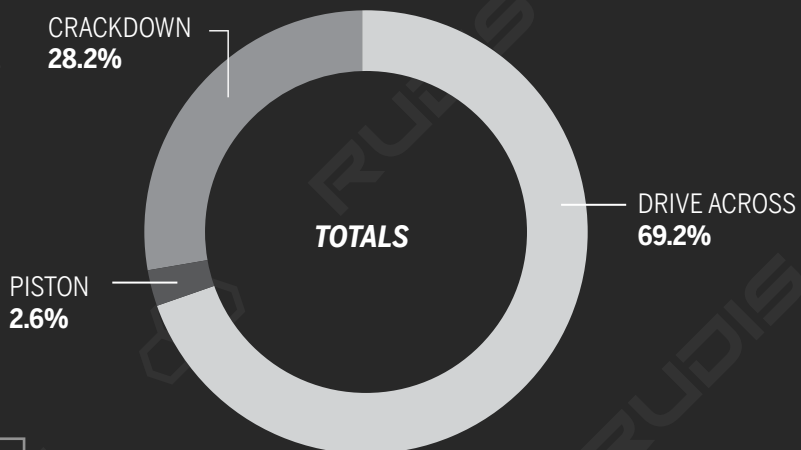
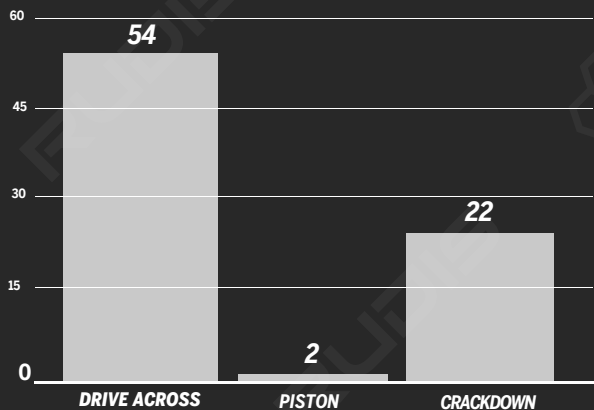
57 KG 65 KG 74 KG 86 KG 97 KG 61 KG 70 KG 79 KG 92 KG 125 KG



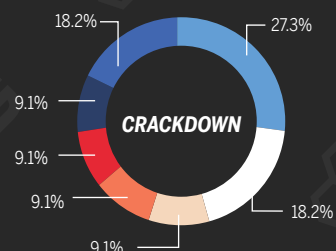
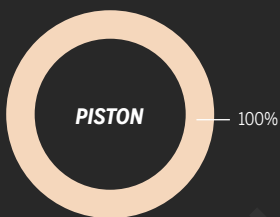
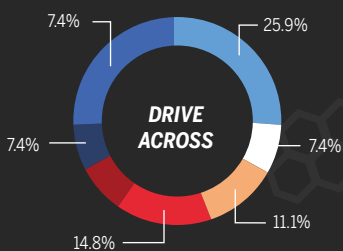


HIGH CROTCH FINISHES

TOTALS



HIGH CROTCH FINISHES BY WEIGHTCLASS



57 KG 65 KG 74 KG 86 KG 97 KG 61 KG 70 KG 79 KG 92 KG 125 KG

